



POUND RIDGE FIRE DISTRICT

Project Presentation

October 8

November 19

December 6



AGENDA

- Introductions
- Fire District Overview
- Current State Assessment
- Project Options
- Renderings and Site Overview
- Financial Summary



FIRE DISTRICT COMPOSITION

- 23.2 square miles
- 4,300 acres of County Reservation
- 240+ students at PRES and Montessori, plus private school, middle school and high school students in busses and private cars on the roads to and from school
- > \$2,000,000,000 (>\$2B) in Property Value



FIRE PROTECTION OVERVIEW

Fire Department

- 501c consisting of department members
- 100% Volunteer (UNPAID)
- 62 members
- Chain of command : 1 Chief, 2 Assistant Chiefs, 1 Captain, 4 Lieutenants

Fire District

- Responsible for taxpayer funds
- 5 commissioners elected to 5-year terms
- Fire department members are governed by district policy
- Commissioners do not have operational authority at responses



FIRE DISTRICT CAPABILITIES

PRFD CAPABILITIES

- Structural firefighting
- Motor vehicle accident and extrication
- Brush fires
- Hiker search and rescue
- Hazardous materials containment
- Medical assist and mass casualty incidents
- Water and ice rescue
- Flood response
- Active shooter
- Fire prevention
- Water supply – no fire hydrants in the district

PRFD APPARATUS

- 2 Attack Engines
- Supply Engine
- Rescue
- Tanker
- Brush Truck
- Polaris
- Utility
- Boat
- Brush trailer with ATV/Gator
- 3 chief's vehicles

COUNTY/MUTUAL AID

- Ladder trucks
- Scuba
- Paramedics / Ambulance
- Dispatch
- Hazardous materials mitigation
- Structural collapse
- Police and medical air support



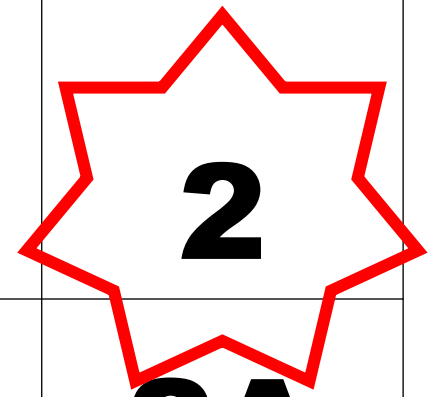
CURRENT SITUATION

- The Firehouse was last updated/expanded over 30 years ago, with a two-bay addition
- Existing infrastructure needs replacement: HVAC, water treatment, generator, IT/Network, vehicle exhaust management, fuel/heating oil storage
- The size of apparatus has grown significantly due to new emissions and safety standards
- Large equipment storage has exceeded current facility capacity (>200%)
- Existing conditions do not allow separation of volunteers' PPE (personal protective equipment) from carcinogenic contamination
- Space limitations create injury hazards



ANALYSIS OF OPTIONS

			Fire Station		
			Existing	Option 1	Option 2
			<i>No Expansion</i>	<i>1-Bay Expansion</i>	<i>2-Bay Expansion</i>
Storage Building	Existing	<i>No Storage Building</i>	At 200% capacity	1	2
	Option A	<i>Big Storage Building</i>	A	1A	2A
	Option B	<i>Small Storage Building</i>	B	1B	2B



2 Bay Option – Most Functional and Economical Decision

- Cost of Options A & B (large or small secondary building) on the property was higher than expected due to environmental and soil remediation work required, and did not meet functional needs
- Option 1 (1 Bay) would be filled to 100% capacity upon ribbon cutting, which does not support long term growth
- Option 2 (2 Bay) for an additional \$800K, leaves approximately 30% space for growth





POUND RIDGE VOLUNTEER FIRE DEPT.

FRONT



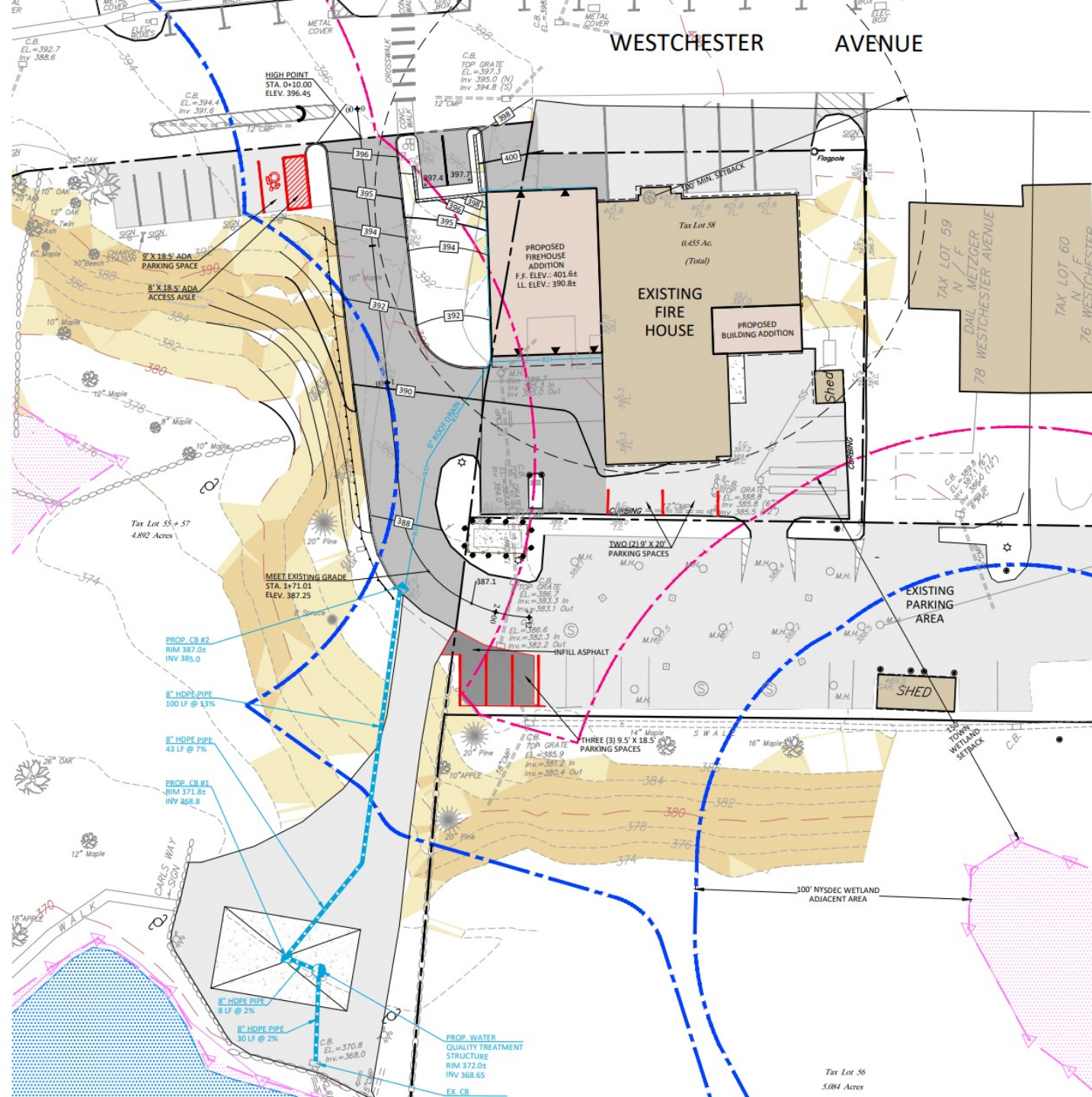
REAR

KG+D

listen

imagine

build



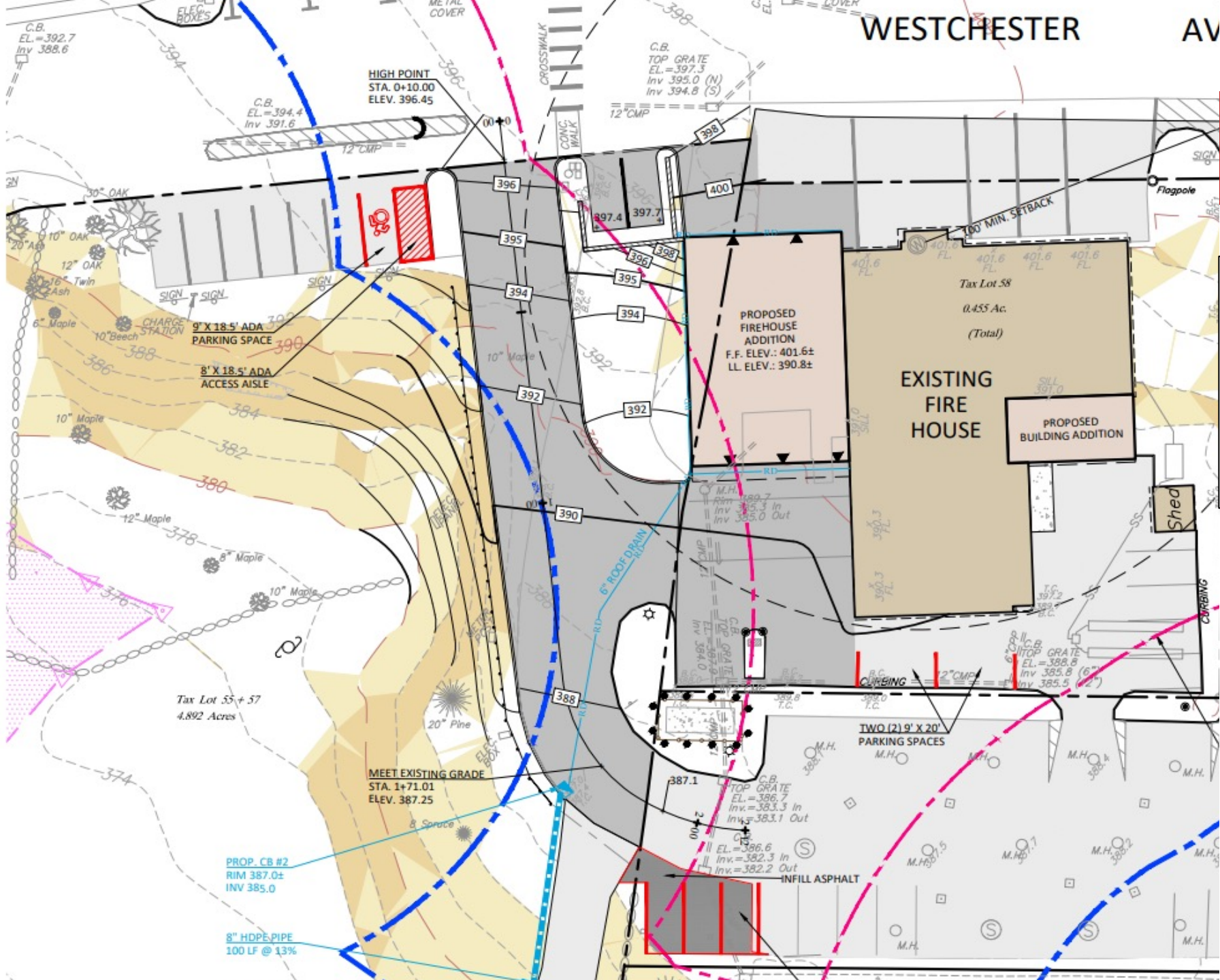
2-BAY ADDITION

- Addition is bay and storage space, which does not require upgrades to septic
- Includes bump-out behind building to relocate offices
- Net +1 in marked spots, but +4 with available spots
- Installs water-quality system with catch basins for environmental purposes



DRIVEWAY RELOCATION

- Driveway to be relocated
- Crosswalk remains in current location



DISTRICT FINANCIAL HISTORY

The fire district has been operating responsibly, with minimal tax levy increases

Year	Town Taxable Value	District Budget	Tax Levy per \$1,000
2017	\$379,007,317	\$769,460	\$2.03
2018	\$379,922,065	\$771,806	\$2.03
2019	\$380,718,207	\$772,858	\$2.03
2020	\$381,350,268	\$809,044	\$2.12
2021	\$381,058,995	\$826,097	\$2.17
2022	\$381,167,366	\$826,980	\$2.17

Fire District Tax represents 1.7% of total property tax bill

Less than a 7% increase in 6 years

The cumulative price increase for the dollar/other general living expenses has increased almost 21% over that same period



DRAFT COST

Project Cost Category	Estimated Amount
Site Work	\$420,000
Existing Building Infrastructure	\$1,430,000
2 Bay Addition/Office Extension	\$4,200,000
Construction Escalation	\$1,200,000
Sub Total	\$7,250,000
Less Amount from Existing Reserve	-\$750,000
Project Cost Balance	\$6,500,000

Estimates include equipment, 15% contingency and project soft costs

Building expansion is one component of the project

Site work and existing infrastructure upgrades represent \$1.8M of overall cost

Project can be financed over 27 years

Tax levy impact per \$1,000 is \$1.04



ANNUAL FINANCIAL IMPACT PER HOUSEHOLD

Assessed Home Value	Current Tax Level	Project Increase	Total Fire Tax	Market Value of house
\$80,300	\$174	\$83	\$257	\$500,000
\$120,450	\$260	\$125	\$386	\$750,000
\$160,600	\$347	\$167	\$514	\$1,000,000
\$200,750	\$434	\$209	\$643	\$1,250,000
\$240,900	\$521	\$250	\$771	\$1,500,000

Included a view of assessed value and market value

Estimated interest rate 4.25%

Assumes tax equalization rate of 16.06%





POUND RIDGE FIRE DISTRICT

THANK YOU

For more information, please visit our website at www.poundridgefiredistrict.com

Please sign up for email updates: email us at project@poundridgefire.com



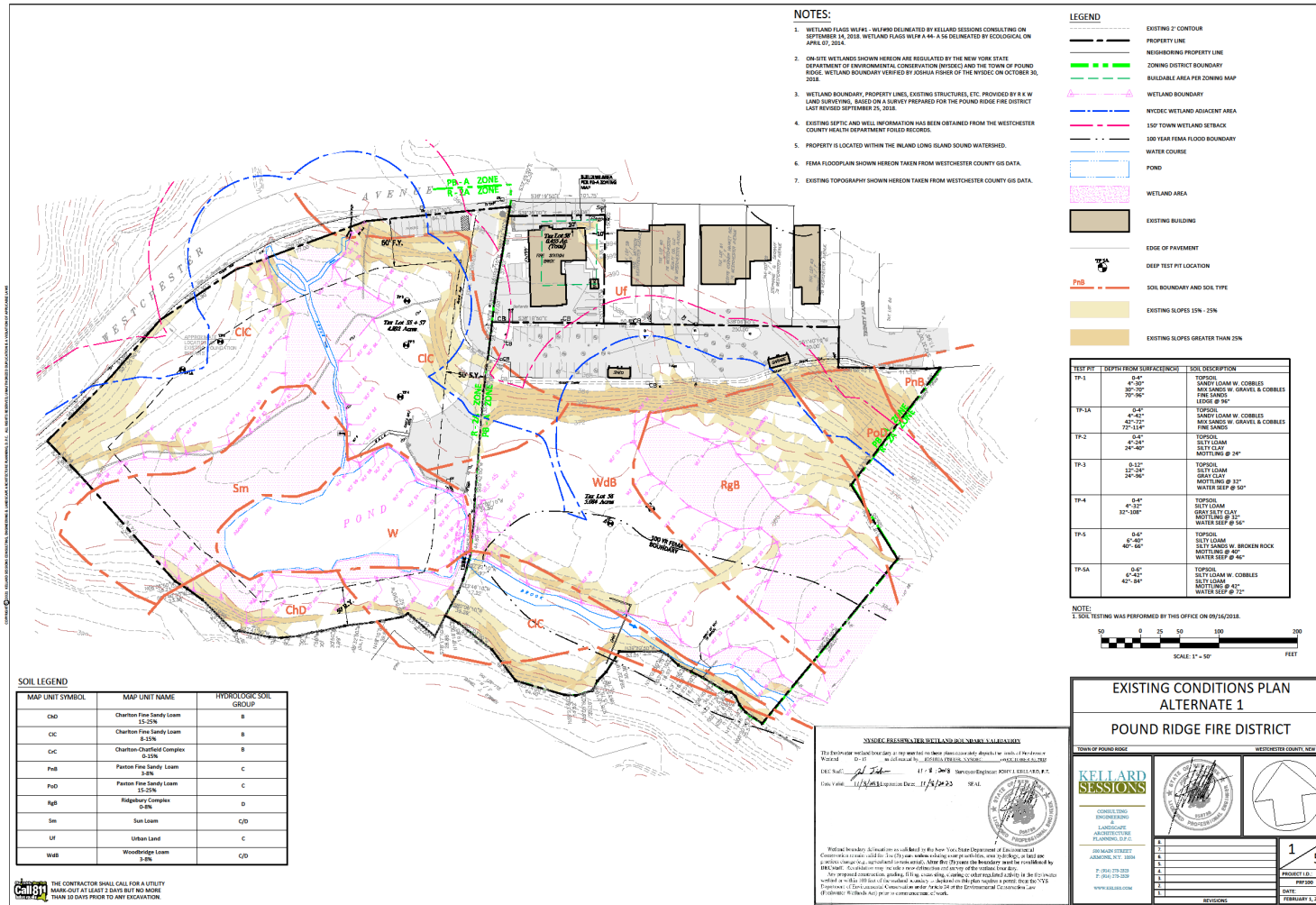


POUND RIDGE FIRE DISTRICT

APPENDIX



Pound Ridge Fire District Property in Scott's Corners



SEQRA (Environmental Impact Review) Oversight

- NYS Department of Environmental Conservation
- Westchester County Department for Historic Preservation
- Westchester County Department of Health
- Pound Ridge Water Control Commission
- Pound Ridge Planning Board
- Westchester County Department of Planning
- Pound Ridge Conservation Board
- Aquarian Water Company
- Town of Pound Ridge Highway Superintendent

No objections to fire district serving as lead agency, Town review of site plan